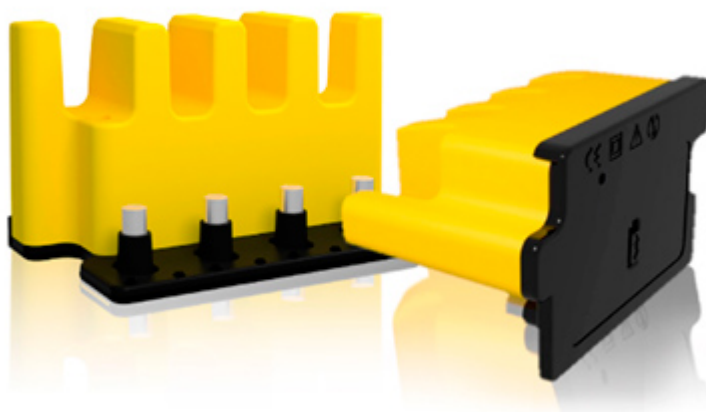


Fix Me! This page is not fully translated, yet. Please help completing the translation. (remove this paragraph once the translation is finished)

0001·WiBeee ~ WiFi Power Meter

Description

WiBeee equipment is designed to be simple to install and with performance above equipment of the same competitive range.



It is specially designed for the control of the electric consumptions in medium / large establishments in which a modification of the facilities to house a conventional network analyzer is complicated by the implications of space and wiring that their placement implies.

It is an ideal equipment for the segregation of consumption from the general picture, since its easy installation and low cost make of *WiBeee* a very interesting product for these tasks.

The communication of *WiBeee* equipment is done through a WiFi connection from the equipment itself, without the need for walkways or other equipment, we simply configure the access point to access the Internet and the equipment will do the rest.

If installation is done in the same distribution box without needing to occupy space for its placement since its design is optimized to be placed on the magnetotemmers of the installation itself.

This feature allows placement in any existing cabinet without its installation involving any changes in the layout of the magnetothermal or in the wiring, since the equipment itself uses the terminals of the magnetothermal for its power.

Parameters

| Parameter | Minimum | Tipycal | Maximum | Unity |
|--------------|---------|---------|---------|-----------|
| Power Supply | 85 | 230 | 265 | VAC (F-N) |
| Consumption | 5 | 17 | 19 | mA |

| Parameter | Minimum | Tipycal | Maximum | Unity |
|------------------|--------------------|---------|---------|-----------|
| Frecuency | 50 | | 60 | Hz |
| Measure | 85 | | 265 | VAC (F-N) |
| | 0 | | 65 | A |
| Precision | | 2 | | % |
| Work Temperature | -25 | | 45 | °C |
| Humidity | 5 | | 95 | %Hr |
| Maximum Altitude | | | 2000 | m |
| Comunications | WiFi (IEEE 802.11) | | | |
| frecuency Range | 2,405 | | 2,480 | GHz |

Connection

Startup

Configuration

Use

From:

<http://avftechnology.com/doc/> - **Doc Site**

Permanent link:

<http://avftechnology.com/doc/doku.php?id=en:0001:wibeee&rev=1507401258>

Last update: **07/10/2017 18:34**

